



# Ptx3 Polyclonal Antibody

<b>Catalog No</b>	YP-Ab-15958
<b>Isotype</b>	IgG
<b>Reactivity</b>	Human;Mouse
<b>Applications</b>	WB;IHC;IF;ELISA
<b>Gene Name</b>	PTX3
<b>Protein Name</b>	Pentraxin-related protein PTX3
<b>Immunogen</b>	The antiserum was produced against synthesized peptide derived from human PTX3. AA range:1-50
<b>Specificity</b>	Ptx3 Polyclonal Antibody detects endogenous levels of Ptx3 protein.
<b>Formulation</b>	Liquid in PBS containing 50% glycerol, 0.5% BSA and 0.02% sodium azide.
<b>Source</b>	Polyclonal, Rabbit,IgG
<b>Purification</b>	The antibody was affinity-purified from rabbit antiserum by affinity-chromatography using epitope-specific immunogen.
<b>Dilution</b>	Western Blot: 1/500 - 1/2000. Immunohistochemistry: 1/100 - 1/300. Immunofluorescence: 1/200 - 1/1000. ELISA: 1/10000. Not yet tested in other applications.
<b>Concentration</b>	1 mg/ml
<b>Purity</b>	≥90%
<b>Storage Stability</b>	-20°C/1 year
<b>Synonyms</b>	PTX3; TNFAIP5; TSG14; Pentraxin-related protein PTX3; Pentraxin-related protein PTX3; Tumor necrosis factor alpha-induced protein 5; TNF alpha-induced protein 5; Tumor necrosis factor-inducible gene 14 protein; TSG-14
<b>Observed Band</b>	40kD
<b>Cell Pathway</b>	Secreted.
<b>Tissue Specificity</b>	Brain,Endothelial cell,Foreskin,
<b>Function</b>	function:Plays a role in the regulation of innate resistance to pathogens, inflammatory reactions, possibly clearance of self-components and female fertility.,induction:By interleukin-1 beta and TNF-alpha.,PTM:Glycosylated.,similarity:Contains 1 pentraxin domain.,subunit:Homooctamer; disulfide-linked. Binds to C1q.,
<b>Background</b>	This gene encodes a member of the pentraxin protein family. The expression of this protein is induced by inflammatory cytokines in response to inflammatory stimuli in several mesenchymal and epithelial cell types, particularly endothelial cells and mononuclear phagocytes. The protein promotes fibrocyte differentiation and is involved in regulating inflammation and complement activation. It also plays a role in angiogenesis and tissue remodeling. The protein serves as a biomarker



for several inflammatory conditions. [provided by RefSeq, Jun 2016],

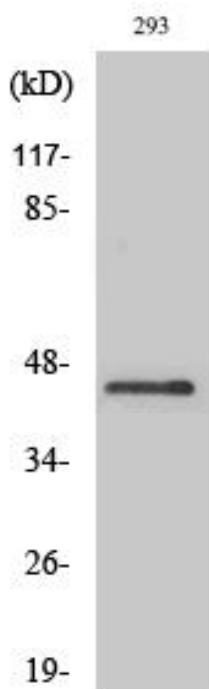
**matters needing attention**

Avoid repeated freezing and thawing!

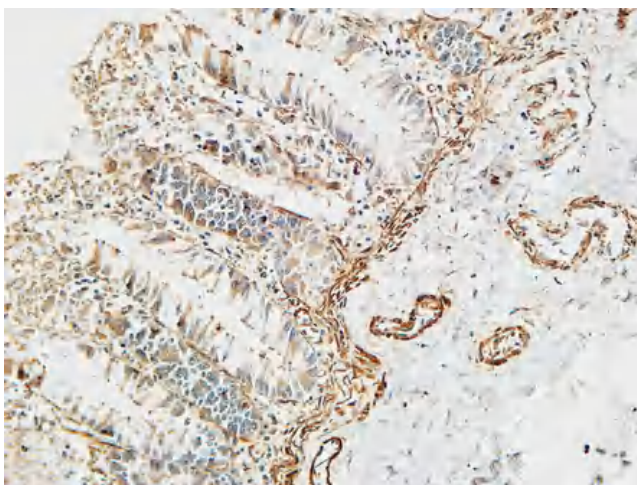
**Usage suggestions**

This product can be used in immunological reaction related experiments. For more information, please consult technical personnel.

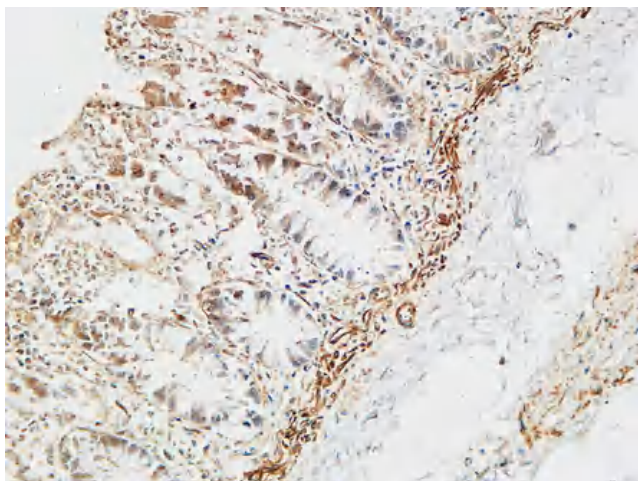
**Products Images**



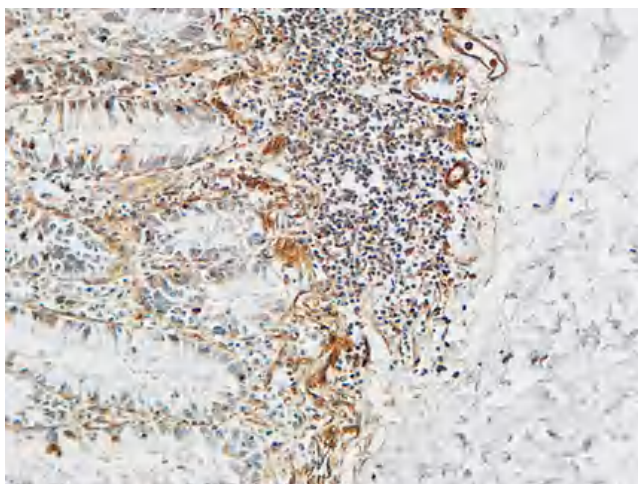
Western Blot analysis of various cells using Ptx3 Polyclonal Antibody diluted at 1:1000



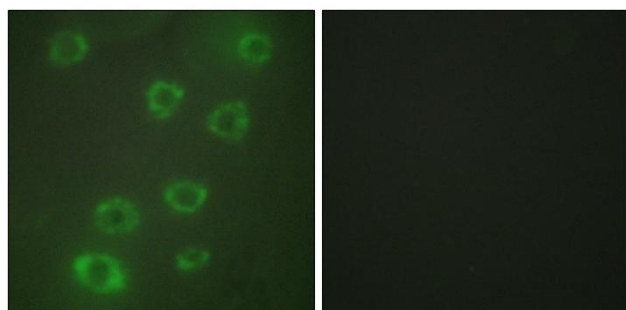
Immunohistochemical analysis of paraffin-embedded Human colon. 1, Antibody was diluted at 1:100(4° overnight). 2, High-pressure and temperature EDTA, pH8.0 was used for antigen retrieval. 3,Secondary antibody was diluted at 1:200(room temperature, 30min).



Immunohistochemical analysis of paraffin-embedded Human colon. 1, Antibody was diluted at 1:100(4° overnight). 2, High-pressure and temperature EDTA, pH8.0 was used for antigen retrieval. 3,Secondary antibody was diluted at 1:200(room temperature, 30min).



Immunohistochemical analysis of paraffin-embedded Human colon. 1, Antibody was diluted at 1:100(4° overnight). 2, High-pressure and temperature EDTA, pH8.0 was used for antigen retrieval. 3,Secondary antibody was diluted at 1:200(room temperature, 30min).



Immunofluorescence analysis of HUVEC cells, using PTX3 Antibody. The picture on the right is blocked with the synthesized peptide.